

EASYMAX[®]

Mini

**SELF-MONITORING
BLOOD GLUCOSE SYSTEM**



EASYMAX[®]

Mini

SELF-MONITORING BLOOD GLUCOSE SYSTEM

Fast !

Test result in 5 seconds.

Small !

Only 0.6 μ L blood sample required.

Long !

Battery life for 1000 tests.

Large !

Memory capacity for 360 tests.



Customer Service Line
0346-EASYMAX
(3279629)

Mon-Sat 10:00AM-6:00PM PST
carebetic@aftablifecare.com



EasyMax Karachi Office
AFTAB LIFECARE IMPEX

M-10, MASHRIQ CENTRE, BLOCK 14,
GULSHAN-E-IQBAL KARACHI 75300 PAKISTAN

EASYMAX[®] Mini

**SELF-MONITORING
BLOOD GLUCOSE SYSTEM**

Compact size

Very portable design for testing everywhere



Before and after meal mark

Manage your glucose better by flagging the readings significantly.

Easy to use

Insert test strip, apply blood and get the result efficiently.

Running A Blood Glucose Test With Blood From Your Fingertip



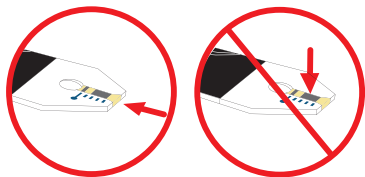
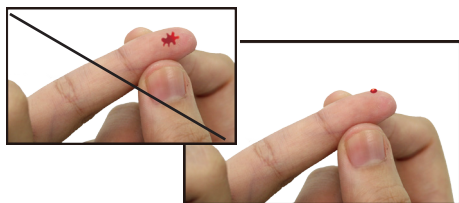
Wash your hands with soap and warm water. Rinse and dry thoroughly.

Put a test strip into the meter in the direction of the arrow. The meter beeps and turns on automatically. When the blood drop flashes on the display, using the lancing device.



Hold the lancing device firmly against the side of your finger. Press the trigger button. Then remove the lancing device from your finger.

Gently squeeze and/or massage your fingertip until a round drop of blood on your fingertip.



Touch the blood drop at the tip of the transparent window of the test strip. Do not put blood on top of the strip. When you hear beeps, you have enough control solution in the test strip. Be sure to get enough blood in the test strip. Otherwise, an inaccurate reading may result.



The meter starts to count down from 5 seconds, the display shows "Ok", and then shows the test result. Remove the test strip and the meter turns off automatically.